

ROADWAY

Median U-turn Locations

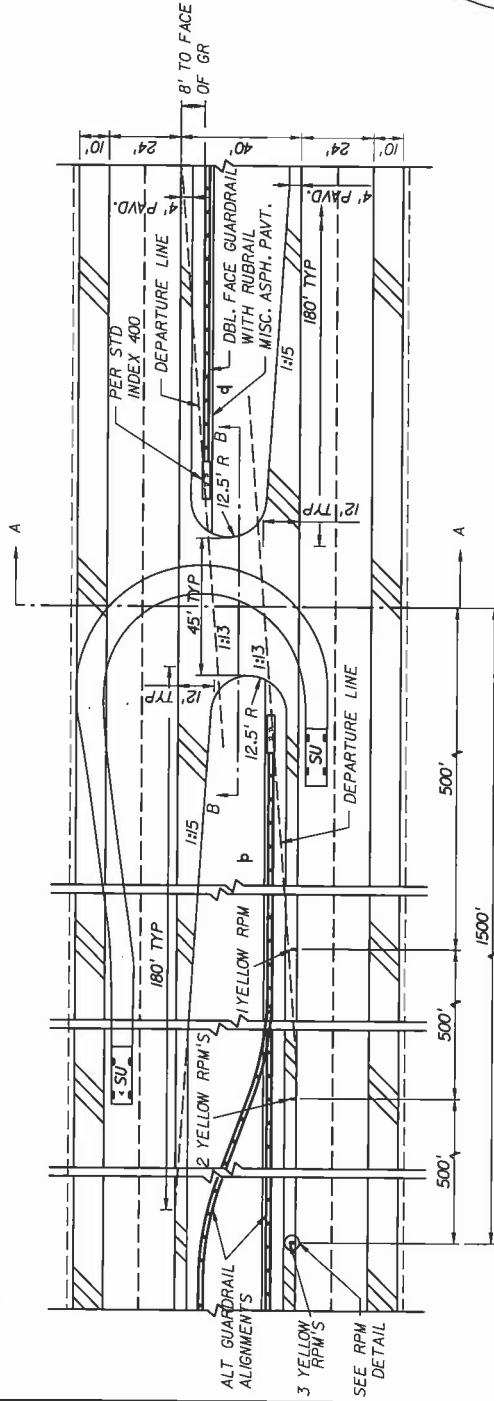
Median u-turn openings are present along all of the Turnpike transportation systems. The placement, spacing, and design of these have evolved over the years, with criteria available within FDOT PPM and TPPP to be used when upgrading existing locations and/or constructing new. TPPP provides specific criteria for u-turn median crossovers on Turnpike system. The Department Guide Drawings available to consultants as a guide during a project's design development. The placement and final design of a median u-turn should be reviewed for applicability with existing field conditions.

Median u-turn guide drawings were used to develop construction plan details to upgrade a u-turn location on the system where 64' median is present. The plans called for Type II end treatments at median guardrail which terminated within clear zone of approaching traffic. The Department incurred costs for removal of back side guardrail and replacement of newly placed Type II end treatments with flared end treatments.

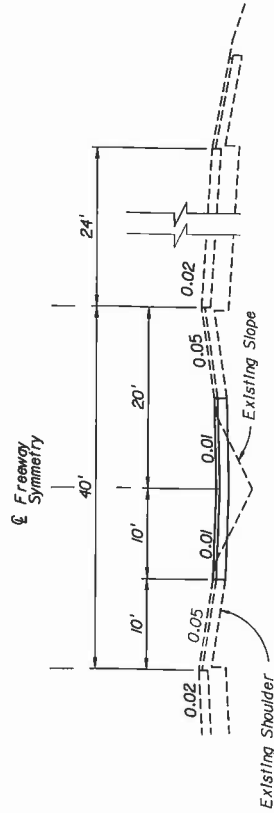
Lessons Learned: Designers are responsible for review and evaluation of all applicable criteria and reference documentation. Design Standards provide information; but PPM, Chapter 2 and 4, also provide further clarification of design and information on non crashworthy elements within the clear zone of approaching traffic.

The TPPP median u-turn guide drawings have also been updated and revised to provide further guidance on design. Notes have been added to drawings which refer design consultants to all reference documentation and resources for review.

FIGURE 2.14.4 (a)
 MEDIAN BARRIER OPENING FOR
 CROSSOVERS ON LIMITED ACCESS
 4-LANE FACILITY - 40' MEDIAN
 TYPICAL LAYOUT



PLAN VIEW

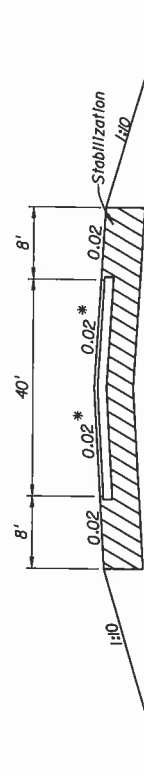
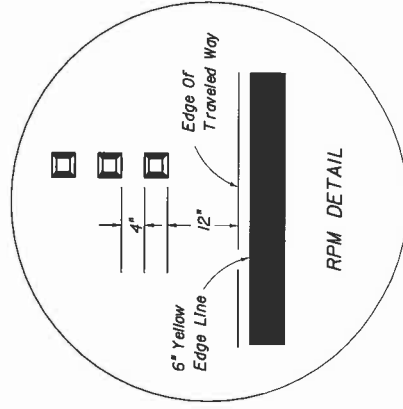


SECTION A-A

- NOTES:
1. THIS DETAIL REPRESENTS A FOUR LANE FACILITY WITH A 40' MEDIAN
 2. FOR 64' MEDIAN AND ADDITIONAL INFORMATION SEE PPM & TPPP
 3. REFER TO DESIGN STANDARD INDEX 400 FOR ADDITIONAL GUIDANCE
 4. DRAINAGE ANALYZED ON SITE BY SITE BASIS
 5. PROVIDE A GRADING DETAIL AT EACH LOCATION

LEGEND:

- P Sign
- Double Yellow Delinicator
- R3-4 (36" x 36")
- OFFICIAL USE ONLY
- FTP-66-04 (36" x 18")



SECTION B-B

* For freeway grades 2% or greater, match freeway grade