



# Turnpike Design Website



## Change/Update Request

To (Assistant Design Engineer): Bob Alderman To (Design Manager): Tom Pridgen

**Date: 6/17/09 Request By: Robin Hathaway**

Type of Update	Media
	<input checked="" type="checkbox"/> Website
	Attachments: <input checked="" type="checkbox"/> Yes Will provide attachments via email, since this form will not allow me to attach documents.

\*

**TPPPH Volume:**

**TPPPH Chapter:**

**TPPPH Section:**

### Description of Change/Update

Please reference the attachments to be updated and/or replaced with the most recent shop drawing procedures for Florida's Turnpike, which include the following:

Updated - Electronic Shop Drawing Procedures for General Contractors.pdf

New - Electronic Shop Drawing Procedures for Design Build Projects. pdf

Updated - Electronic Shop Drawing Procedures for the Engineer of Record/Architect of Record.pdf

New - Shop Drawing Routing Chart. pdf

Also, see the attached .pdf named "Layout and Order.pdf, which depicts the order of how items should be laid - out on the Shop Drawing Website. (I can coordinate this portion with Brian Iezzi).

Add a new link called **ProjectSolve** Helpful Tips, to will include the following documents:

ProjectSolve FAQ.pdf

ProjectSolve SPAM Filter Settings Fix.pdf

ProjectSolve Shop Drawing Quick Reference. Pdf

Active X Troubleshooting.pdf

Add a new link called Links, to include the following Website Links

ProjectSolve: <https://ww2.projectsolve2.com/>

QPL: <http://www.dot.state.fl.us/specificationsoffice/ProductEvaluation/QPL/Default.shtm>

APL: [http://www.dot.state.fl.us/trafficoperations/Traf\\_Sys/terl/apl2.shtm](http://www.dot.state.fl.us/trafficoperations/Traf_Sys/terl/apl2.shtm)

Turnpike Construction: <http://flturnpikeoperations.com/Offices/Construction/tabid/124/Default.aspx>

FDOT Materials: <http://www.dot.state.fl.us/statematerialsoffice/>

Creating Electronic Dynamic Stamping thru Adobe - Web Link: <http://acrobat.timhuff.net/?p=24>



# Turnpike Design Website

Background Graphics: Please see the .jpg file to be used as background graphics (if possible) or just graphics to our WebPage. (will be sent in a separate email as stated above)

Also, see the attached .pdf named "Layout and Order.pdf, which depicts the order of how items should be laid – out on the Shop Drawing Website. (I can coordinate this portion with Brian Iezzi.

## Concurrence

Design Manager: Robert C. Alderman 6-23-09

Assistant Design Engineer: Thomas McFulger 6-23-09

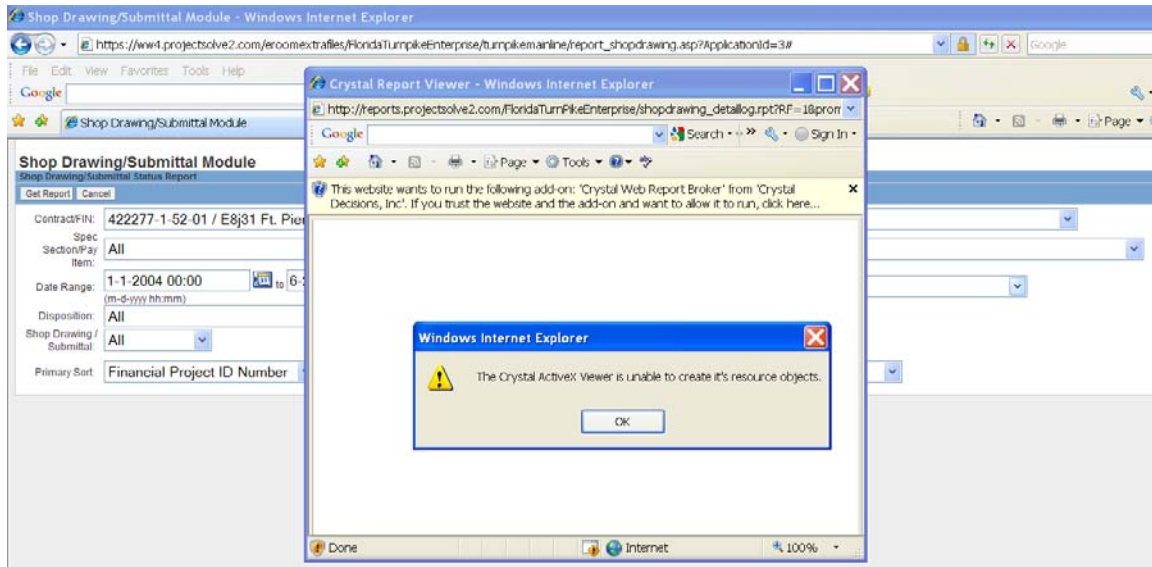
## Completed

Date:

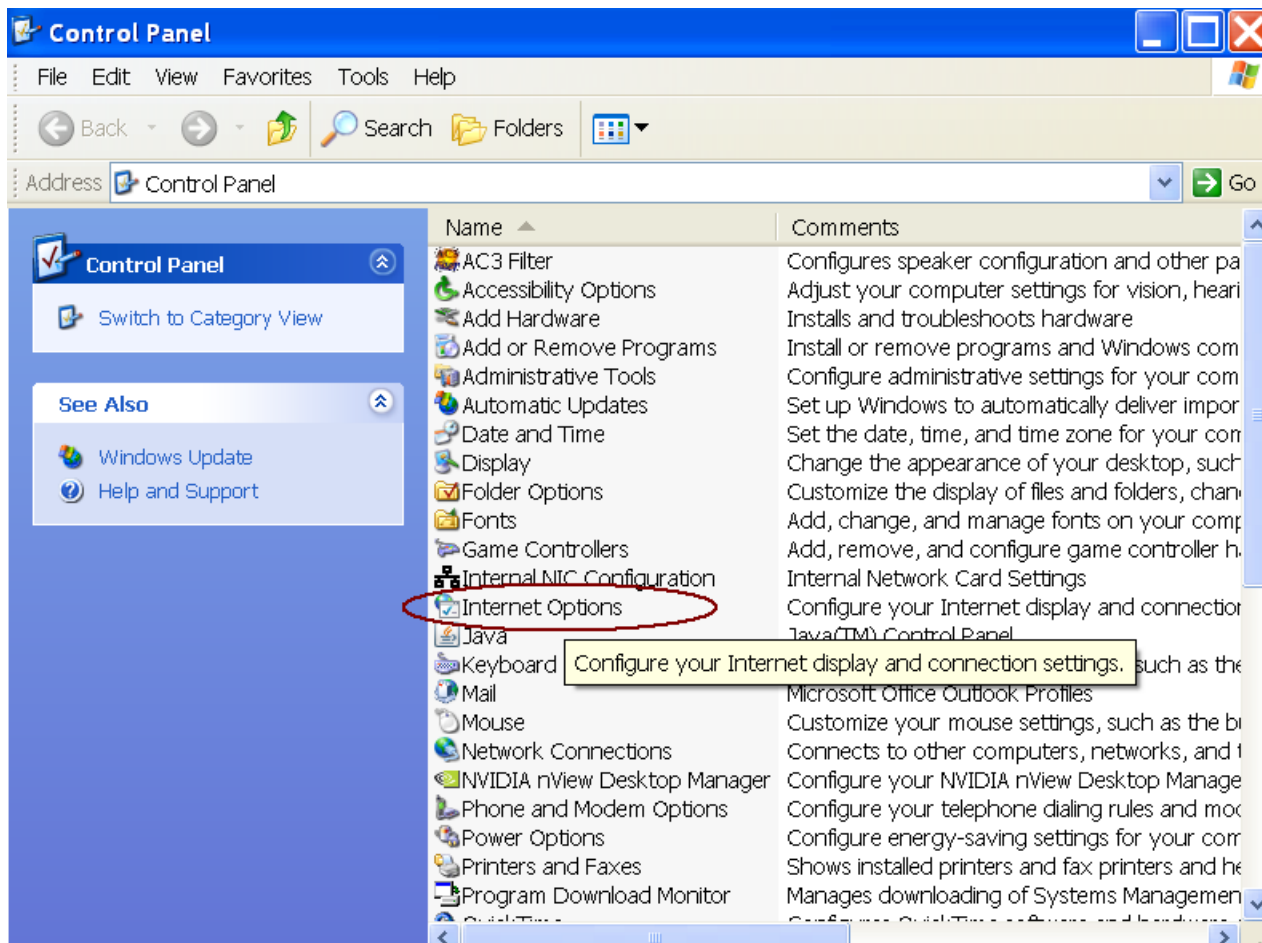
Initials:

## Active X Troubleshooting and Fix for Setting Internet Options for Viewing Shop Drawing Status Reports/RFI Status Reports thru *ProjectSolve*

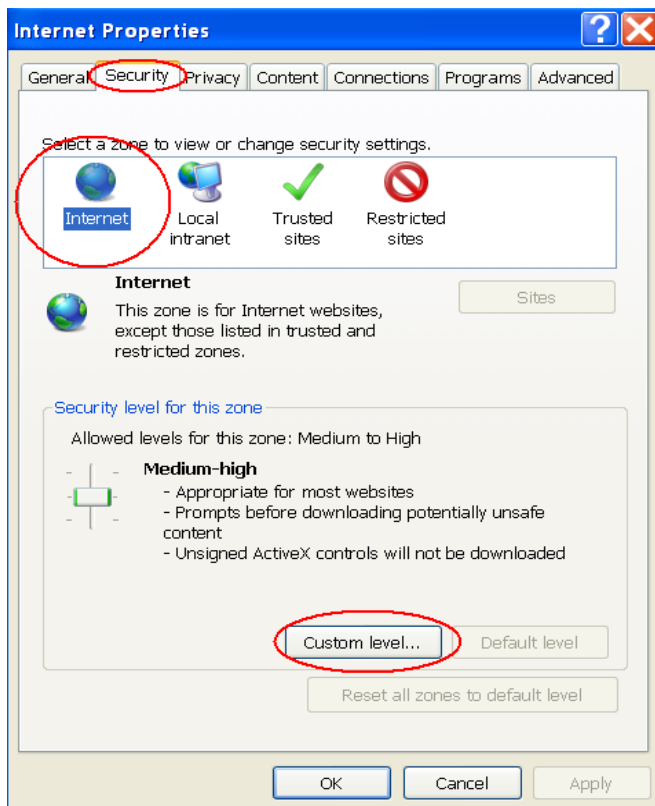
The information detailed below, is to assist the *ProjectSolve* user in troubleshooting when experiencing the following “Active X” error message while generating a Status Report.



Go to the “Control Panel” and Select “Internet Options”



Under the “Security” Tab, highlight “Internet” and select the “Custom Level” button



Scroll down to “ActiveX controls and plug-ins”. On “Allow previously unused ActiveX controls to run without prompt” select “Enable” and click the “OK” button.

